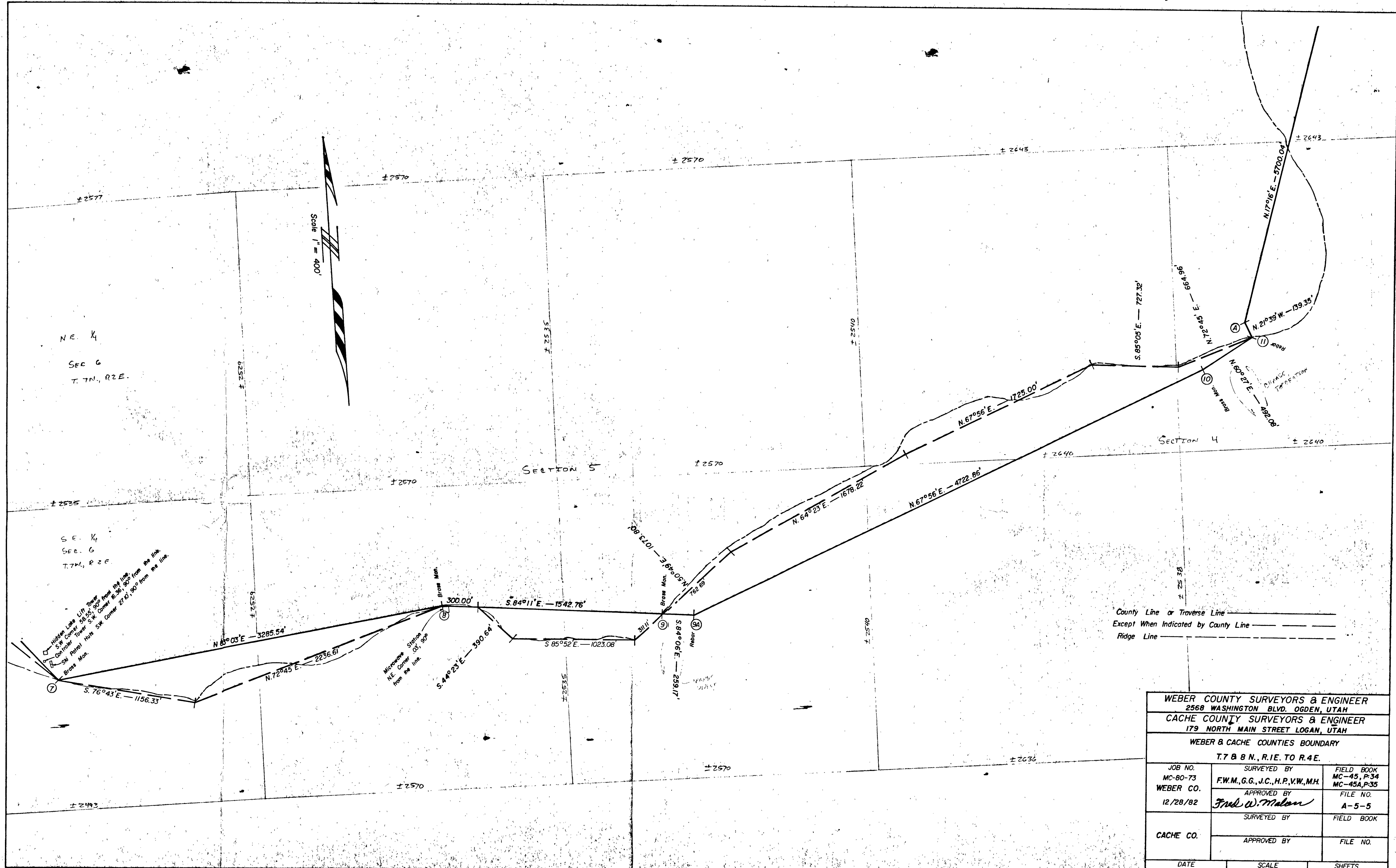


WEBER COUNTY SURVEYORS & ENGINEER 2568 WASHINGTON BLVD. OGDEN, UTAH		
CACHE COUNTY SURVEYORS & ENGINEER 179 NORTH MAIN STREET LOGAN, UTAH		
WEBER & CACHE COUNTIES BOUNDARY T. 7 & 8 N., R. 1 E. TO R. 4 E.		
JOB NO. MC-80-73 WEBER CO. 12/28/82	SURVEYED BY F.W.M., G.G., J.C., H.P., V.W., M.H. APPROVED BY <i>Fred W. Mclan</i>	FIELD BOOK MC-45, P. 34 MC-45A, P. 35 FILE NO. A-5-5
CACHE CO.	SURVEYED BY	FIELD BOOK
	APPROVED BY	FILE NO.
DATE	SCALE 1" = 400'	SHEETS 1 of 7



NE ¼  
SEC 6  
T. 7N., R. 2E.

SE ¼  
SEC 6  
T. 7N., R. 2E.

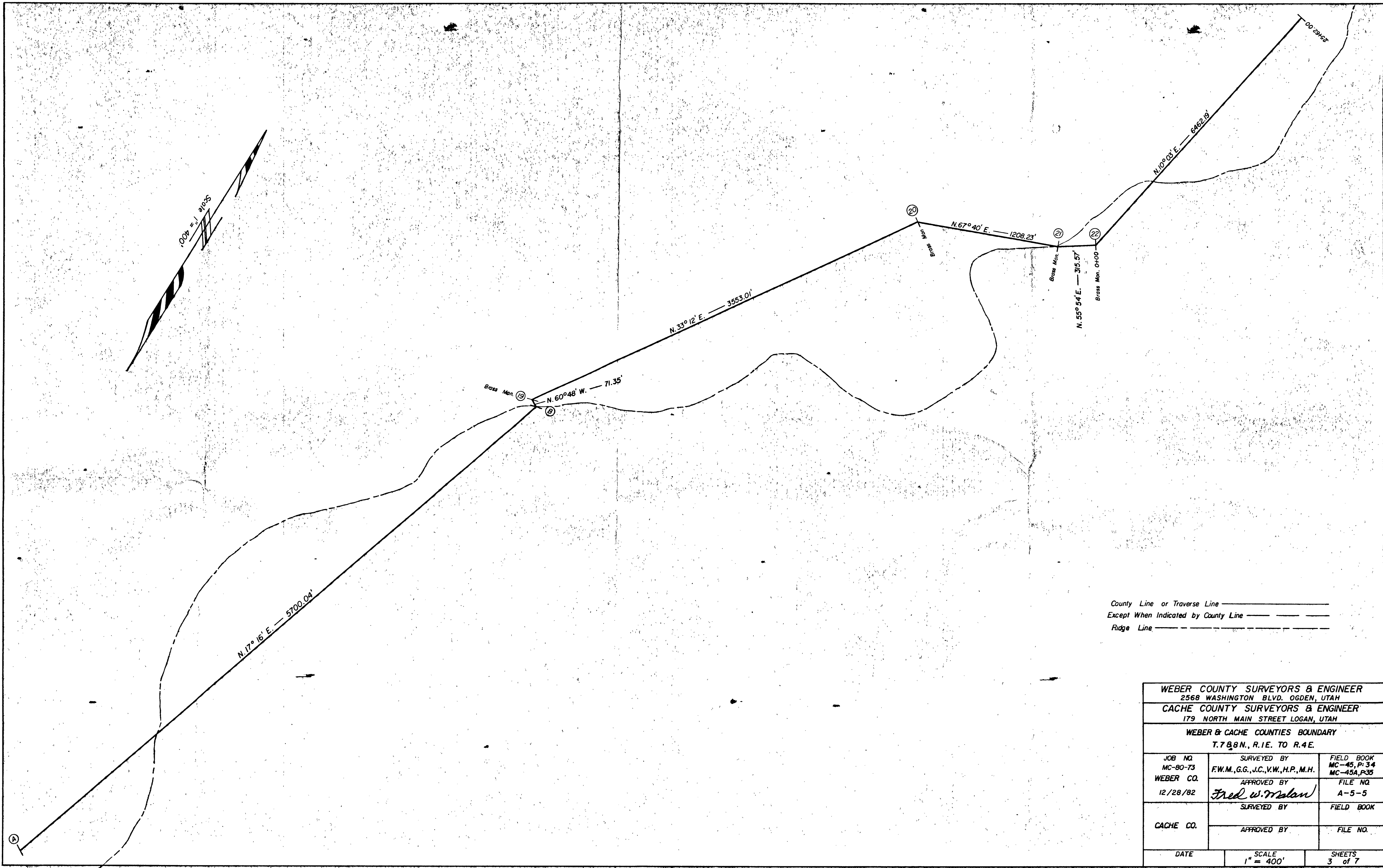
Wedge Lake U/L Tower  
S.W. Corner 585.50' from the line  
R. Control Tower S.W. Corner 634.50' from the line  
S.W. Corner 270.50' from the line  
Bronze Mon.

Microwave Station  
N.E. Corner 91.50' from the line

CIVIL ENGINE  
TERRACE  
N. 60° 27' E - 152.08'  
N. 21° 33' W - 139.35'  
N 17° 16' E - 5700.04'

County Line or Traverse Line ———  
Except When Indicated by County Line - - - -  
Ridge Line ·····

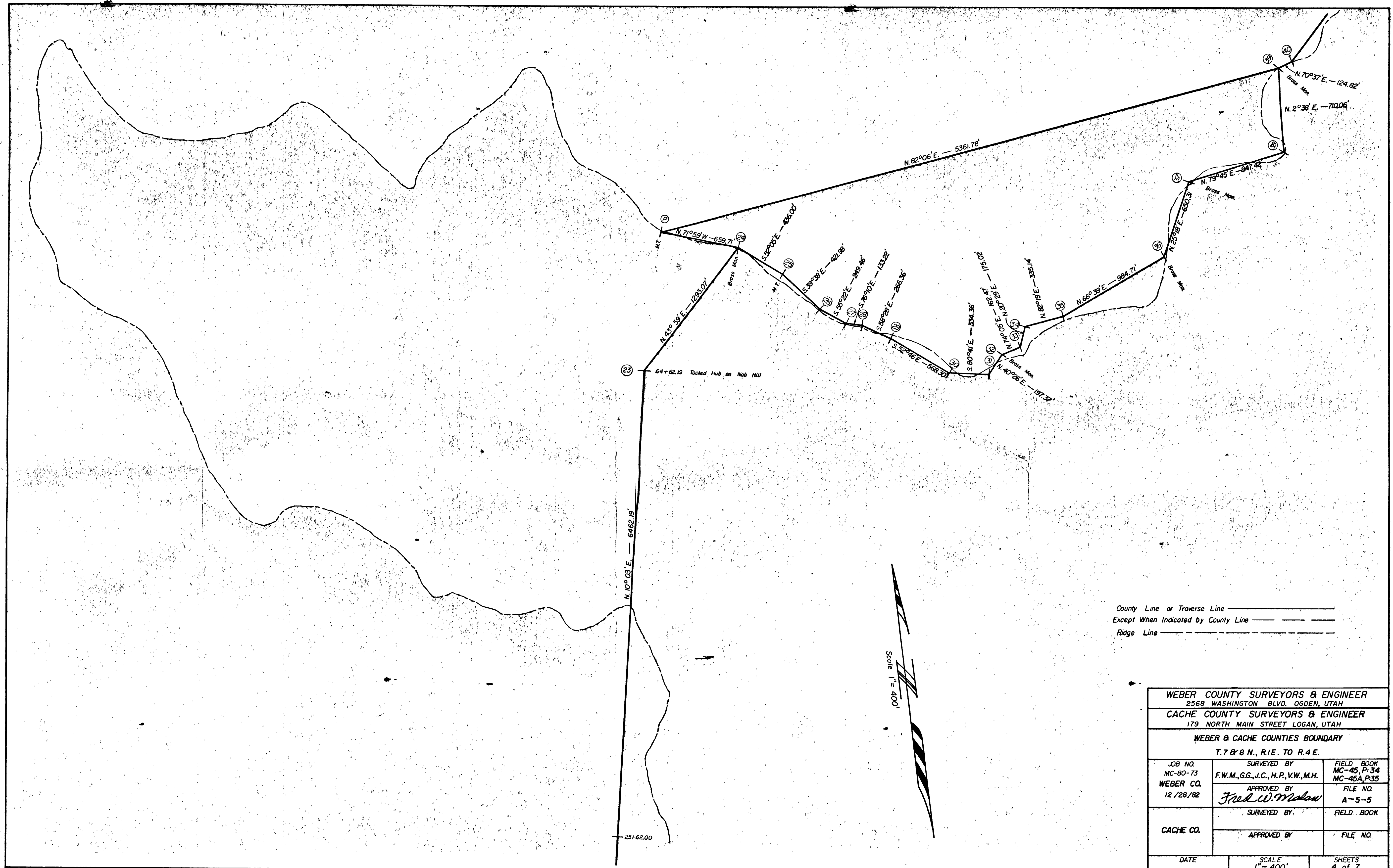
WEBER COUNTY SURVEYORS & ENGINEER 2568 WASHINGTON BLVD. OGDEN, UTAH		
CACHE COUNTY SURVEYORS & ENGINEER 179 NORTH MAIN STREET LOGAN, UTAH		
WEBER & CACHE COUNTIES BOUNDARY T. 7 & 8 N., R. 1E. TO R. 4E.		
JOB NO. MC-80-73 WEBER CO. 12/28/82	SURVEYED BY F.W.M., G.G., J.C., H.P., V.W., M.H. APPROVED BY <i>Fred W. Malan</i>	FIELD BOOK MC-45, P. 34 MC-45A, P. 35 FILE NO. A-5-5
CACHE CO.	SURVEYED BY	FIELD BOOK
	APPROVED BY	FILE NO.
DATE	SCALE 1" = 400'	SHEETS 2 of 7



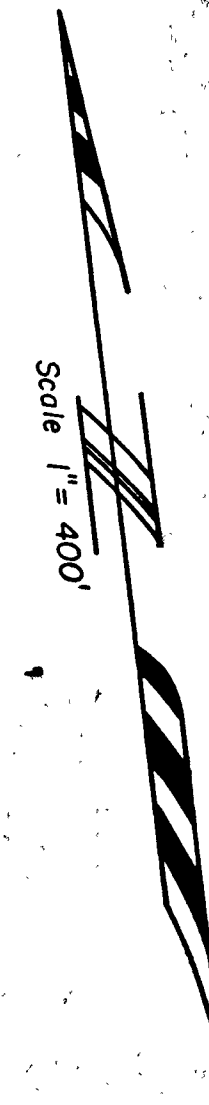
County Line or Traverse Line \_\_\_\_\_  
 Except When Indicated by County Line - - - - -  
 Ridge Line - - - - -

WEBER COUNTY SURVEYORS & ENGINEER 2568 WASHINGTON BLVD. OGDEN, UTAH		
CACHE COUNTY SURVEYORS & ENGINEER 179 NORTH MAIN STREET LOGAN, UTAH		
WEBER & CACHE COUNTIES BOUNDARY T.7&8N., R.1E. TO R.4E.		
JOB NO. MC-80-73 WEBER CO. 12/28/82	SURVEYED BY F.W.M., G.G., J.C., V.W., H.P., M.H. APPROVED BY <i>Fred W. Moran</i>	FIELD BOOK MC-45, P. 3-4 MC-45A, P. 35 FILE NO. A-5-5
CACHE CO.	SURVEYED BY	FIELD BOOK
	APPROVED BY	FILE NO.
DATE	SCALE 1" = 400'	SHEETS 3 of 7

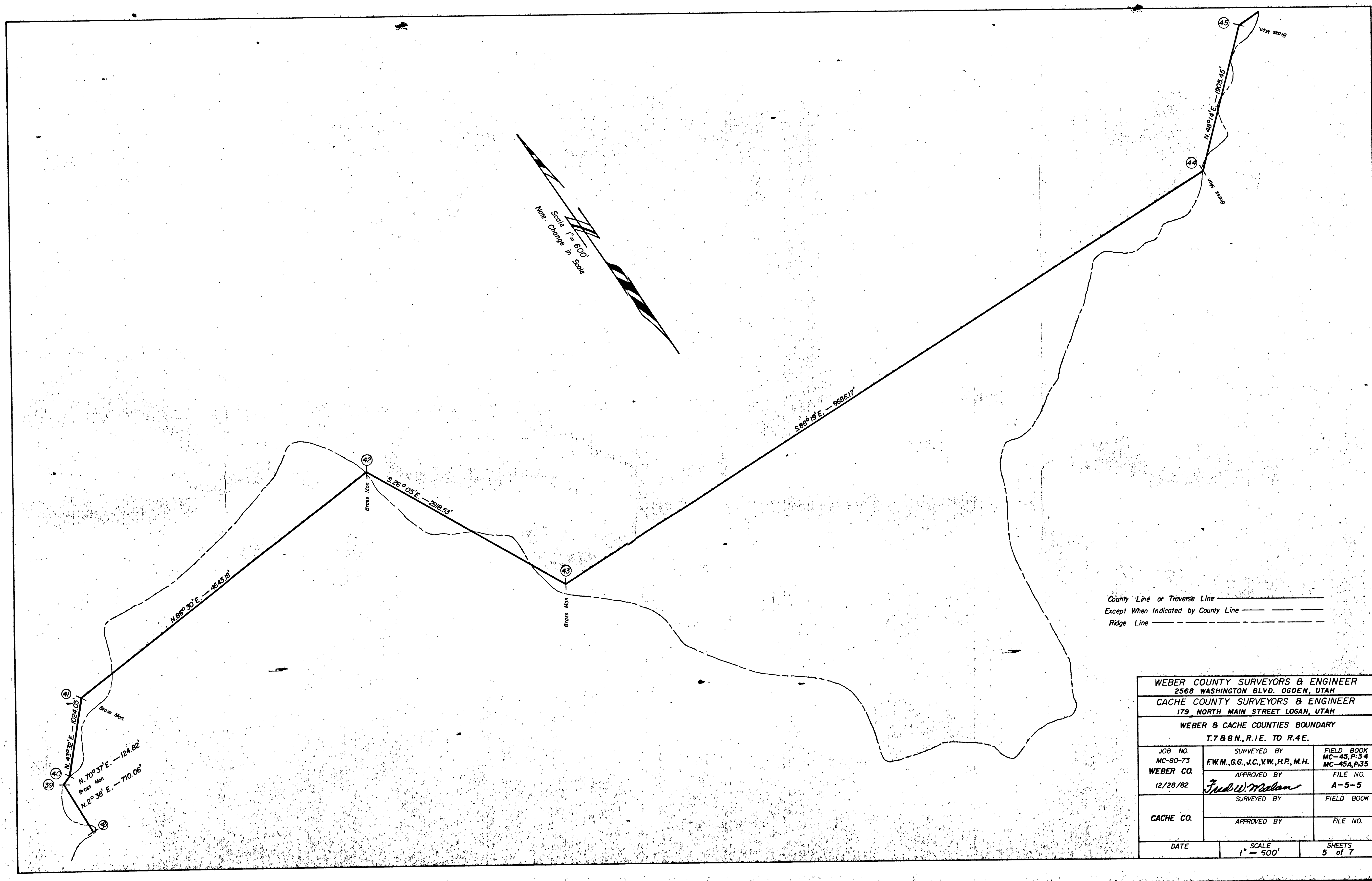




County Line or Traverse Line —————  
 Except When Indicated by County Line —————  
 Ridge Line - - - - -

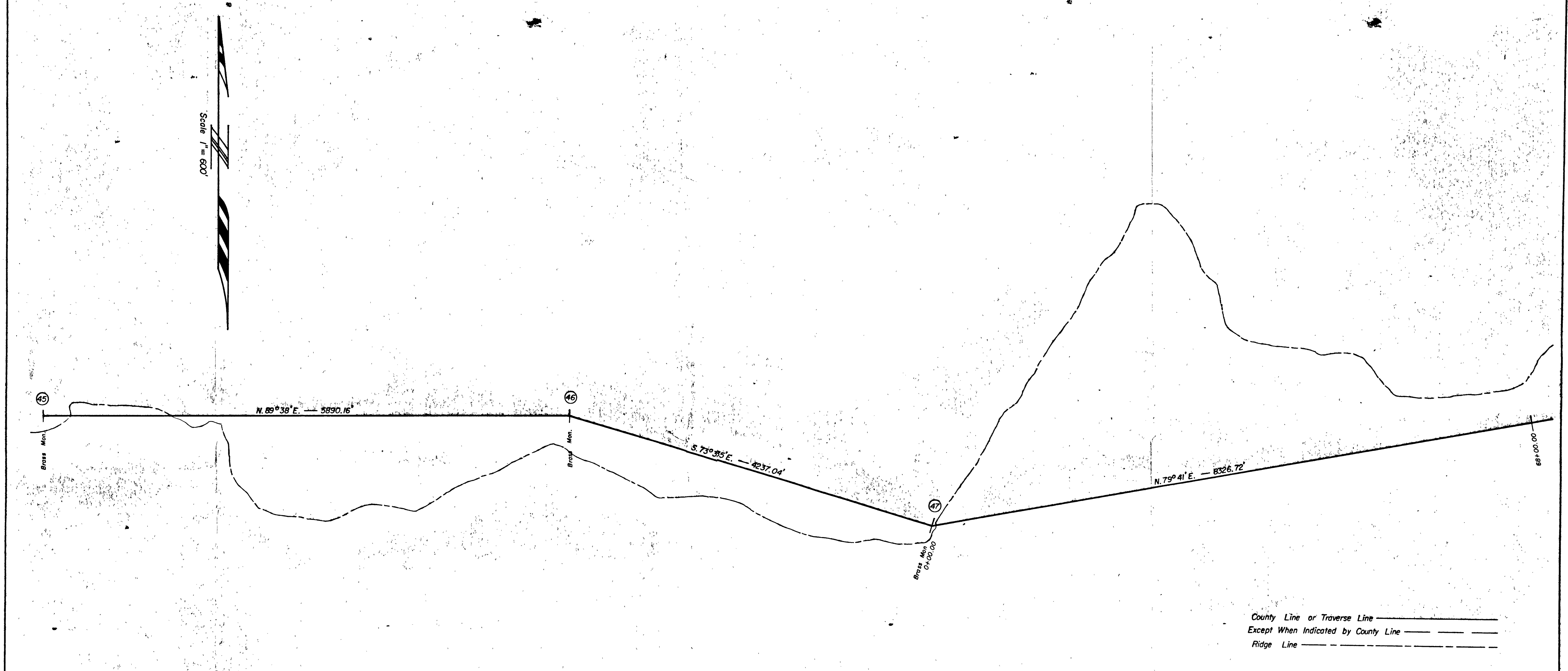


WEBER COUNTY SURVEYORS & ENGINEER 2568 WASHINGTON BLVD. OGDEN, UTAH		
CACHE COUNTY SURVEYORS & ENGINEER 179 NORTH MAIN STREET LOGAN, UTAH		
WEBER & CACHE COUNTIES BOUNDARY T. 7 & 8 N., R. 1 E. TO R. 4 E.		
JOB NO. MC-80-73 WEBER CO. 12/28/82	SURVEYED BY F.W.M., G.G., J.C., H.P., V.W., M.H. APPROVED BY <i>Fred W. Melan</i>	FIELD BOOK MC-45, P. 34 MC-45A, P. 35 FILE NO. A-5-5
CACHE CO.	SURVEYED BY	FIELD BOOK
	APPROVED BY	FILE NO.
DATE	SCALE 1" = 400'	SHEETS 4 of 7



County Line or Traverse Line \_\_\_\_\_  
 Except When Indicated by County Line - - - - -  
 Ridge Line - - - - -

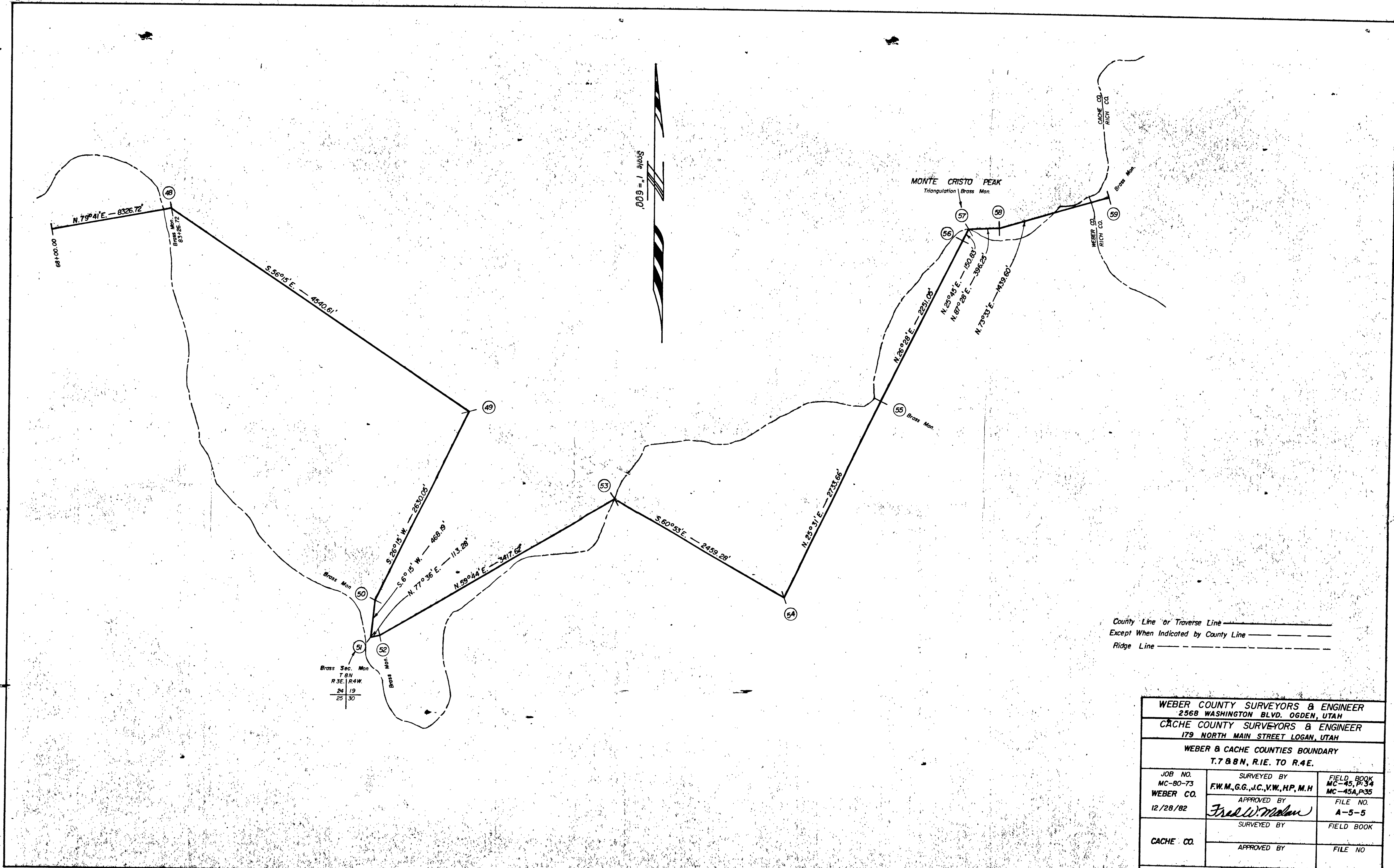
WEBER COUNTY SURVEYORS & ENGINEER 2568 WASHINGTON BLVD. OGDEN, UTAH		
CACHE COUNTY SURVEYORS & ENGINEER 179 NORTH MAIN STREET LOGAN, UTAH		
WEBER & CACHE COUNTIES BOUNDARY T.788N., R.1E. TO R.4E.		
JOB NO. MC-80-73 WEBER CO.	SURVEYED BY F.W.M., G.G., J.C., V.W., H.P., M.H. APPROVED BY <i>Fred W. Melan</i> 12/28/82	FIELD BOOK MC-45, P. 34 MC-45A, P. 35 FILE NO. A-5-5
CACHE CO.	APPROVED BY	FILE NO.
DATE	SCALE 1" = 500'	SHEETS 5 of 7



County Line or Traverse Line \_\_\_\_\_  
 Except When Indicated by County Line \_\_\_\_\_  
 Ridge Line \_\_\_\_\_

WEBER COUNTY SURVEYORS & ENGINEER 2568 WASHINGTON BLVD. OGDEN, UTAH		
CACHE COUNTY SURVEYORS & ENGINEER 179 NORTH MAIN STREET LOGAN, UTAH		
WEBER & CACHE COUNTIES BOUNDARY T.7 & 8 N., R.1 E. TO R.4 E.		
JOB NO. MC-80-73 WEBER CO. 12/28/82	SURVEYED BY F.W.M., G.G., J.C., V.W., H.P., M.H. APPROVED BY <i>Fred W. Nelson</i>	FIELD BOOK MC-45, P. 34 MC-45A, P. 35 FILE NO. A-5-5
CACHE CO.	SURVEYED BY	FIELD BOOK
	APPROVED BY	FILE NO.
DATE	SCALE 1" = 600'	SHEETS 6 of 7





WEBER COUNTY SURVEYORS & ENGINEER 2568 WASHINGTON BLVD. OGDEN, UTAH		
CACHE COUNTY SURVEYORS & ENGINEER 179 NORTH MAIN STREET LOGAN, UTAH		
WEBER & CACHE COUNTIES BOUNDARY T. 7 & 8 N., R. 1 E. TO R. 4 E.		
JOB NO. MC-80-73 WEBER CO. 12/28/82	SURVEYED BY F.W.M., G.G., J.C., V.W., H.P., M.H. APPROVED BY <i>Fred W. Nelson</i>	FIELD BOOK MC-45, P. 34 MC-45A, P. 35 FILE NO. A-5-5
CACHE CO.	SURVEYED BY	FIELD BOOK
	APPROVED BY	FILE NO.
DATE	SCALE 1" = 600'	SHEETS 7 of 7